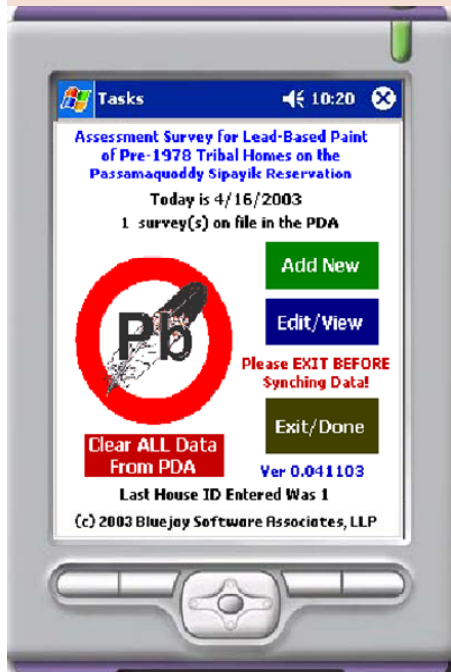


## PBASSESSOR

The PBASSESSOR program provides:

- Questions to screen probable exposures to lead-based paint
- A lead score to determine risk of lead exposure for each residence screened
- A report to assist in targeting homes for needed services
- Questions can serve as an outreach/awareness forum for home owner and lead professional



To download PBASSESSOR go to website:

<http://www.tbep.net/pbassessor>

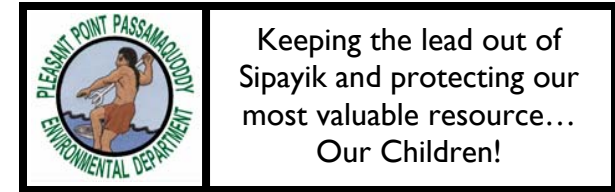
### ACKNOWLEDGEMENT

The Sipayik Lead Program would like to thank and acknowledge funding agency EPA TSCA Section 10 Lead Grantor. The support and encouragement from the Regional Area Coordinator for Lead (EPA Region 1) also made this project possible. TBEP tribal partners have been and continue to be a valuable resource. The State of Maine's Lead Program also contributed technical review of the assessor. Programming and support services were provided by BlueJay Software Associates, LLP.

Endorsement not implied.

REV.#: 06—DRAFT  
DOC#: SPL0001

REV.DATE: 05/21/05  
APPROVED BY: MC



## PBASSESSOR



PocketPC  
Based  
Algorithmic  
Scoring  
System  
Evaluating  
Suspect  
Structural  
Occupied  
Residences

The Sipayik Lead Program has developed this product to provide an inexpensive, efficient, and portable means to evaluate lead risks in pre-1978 homes. Tribes, states, and organizations are encouraged to utilize this software application to assess small communities and neighborhoods.

The Sipayik Lead Program assists and is an integral part of the Pleasant Point Passamaquoddy tribal environmental department. The program has successfully received partial TAS from EPA Region 1 for grant funding purposes.

## PBASSESSOR



Assessment Survey for Lead-Based Paint of Pre-1978 Tribal Homes on the Passamaquoddy Sipayik Reservation Using the Pre-78 Pb Assessor

### Questions used for screening:

- Year home built
- Length of residence
- Children under six
- Condition of exterior and interior paint
- Occupation or hobby exposure
- Renovation in the next 12 months
- Sampling history

### How the PBASSESSOR can help Tribal, State, and Local agencies with baseline studies.

- Reduces paper usage
- Fast, reliable, and easily accessible
- Stores information for reports
- Assess risks
- Assess small communities and neighborhoods

### Next Phase of Baseline Study

- Inspect the 25 tribal homes that scored the highest on the Pre-78 PB ASSESSOR baseline study
- Building capacity to inspect other tribal homes at risk

Range (Assessor Points)	Risk	Action
0-49	Low	Keep It Clean, Awareness
50-99	Moderate	Keep It Clean, Awareness, Screenings
100-199	Caution	Keep It Clean, Awareness, Screenings, Inspection
150-185	High	Keep It Clean, Awareness, Screenings, Inspection, Risk Assessment

Range of risks and recommended actions for each range of risks. A 'Lead Score' is generated from the PBASSESSOR for each residence screened.

### Estimated cost associated with PBASSESSOR software

- Desktop or laptop — \$1500
- Handheld PC — \$400
- Windows XP — OEM
- PocketPC 2003 — OEM
- Pre-78 PBASSESSOR — Free!!!



P.O. Box 343  
 Perry, ME. 04667  
<http://www.tbep.net/pbassessor>  
 Phone: 207-853-2600 Ext. 237  
 Fax: 207-853-6039  
 Email: mikoo@wabanaki.com